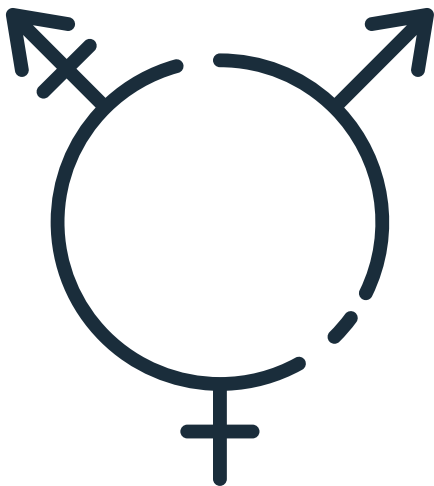


PROJECT UPLIFT PROVIDES:

- Intensive Case Management
- Peer Support
- Substance Use Counseling
- Mental Health Counseling
- Trauma Programming
- LGBTQ+ Specific Treatment
- Linkage to Medical Care and Other Services
- Medical and Legal Systems Navigation



CONTACT US

Center for Health Policy and Inequalities Research at Duke University in collaboration with Mecklenburg County Community Support Services, Funded by SAMHSA

Angel Green

Pronouns: She/her/hers

Phone: (704) 302-4413

Email: Angel.Green@mecklenburgcountync.gov

Haley Cooper

Pronouns: She/her/hers

Phone: (816) 769-3300

Email: haley.cooper@duke.edu

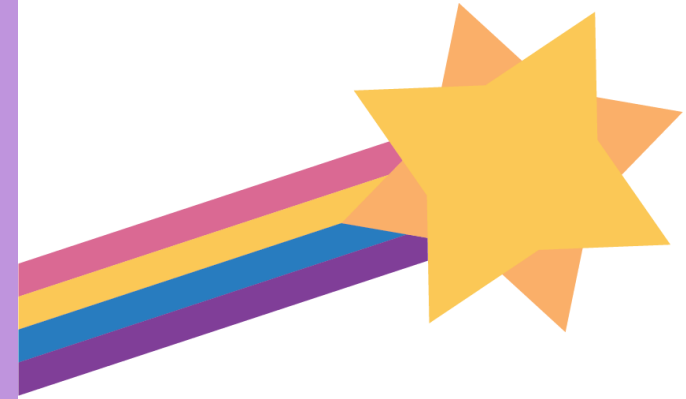
Leni Wilson

Pronouns: She/her/hers

Phone: (919) 270-5384

Email: elena.wilson@duke.edu

PROJECT UPLIFT



Reducing barriers and providing services for those who need it



Center for Health Policy and Inequalities Research at Duke University

WHAT IS PROJECT UPLIFT?

The Project Uplift program will focus on:

- Engaging clients in intensive case management for resource needs
- Providing peer support and outreach
- Providing harm reduction based counseling for mental health, substance use, and trauma
- Providing trauma-informed care, including Seeking Safety curriculum
- Providing education regarding risk reduction, substance use, behavioral health, and HIV/STIs
- Creating a gender affirming environment
- Addressing barriers to treatment



HOW DO I QUALIFY TO PARTICIPATE IN PROJECT UPLIFT?

To qualify for participation in Project Uplift, you must:

- Be ages 18-35
 - Have used any substance in the last 90 days
 - Be able to attend services in Mecklenburg County or Durham County
 - Speak English
 - Identify as LGBTQ+ or gender non-conforming
- OR
- Engage in sex or needle sharing with someone who is LGBTQ+

Project Uplift clients will receive services for 6 months, with the possibility to re-enroll if services continue to be needed. Project Uplift clients will be surveyed twice to see how the program is working for them.

Project Uplift provides young LGBTQ+ adults (ages 18-35) with brief intensive case management for resource needs, and peer support services, and education. The case manager can help with needs like job training, housing, medical care, and legal concerns. Project Uplift also provides counseling for mental health, substance use, and trauma needs. Services are provided free of charge regardless of insurance status. Project Uplift is a grant funded by the Substance Abuse and Mental Health Services Administration (SAMHSA)

INTERESTED IN PARTICIPATING OR LEARNING MORE? CONTACT:

Haley Cooper

Pronouns: She/her/hers
Phone: (816) 769-3300
Email: haley.cooper@duke.edu

or

Angel Green

Pronouns: She/her/hers
Phone: (704) 302-4413
Email: Angel.Green@mecklenburgcountync.gov



Center for Health Policy
& Inequalities Research
AT DUKE UNIVERSITY